

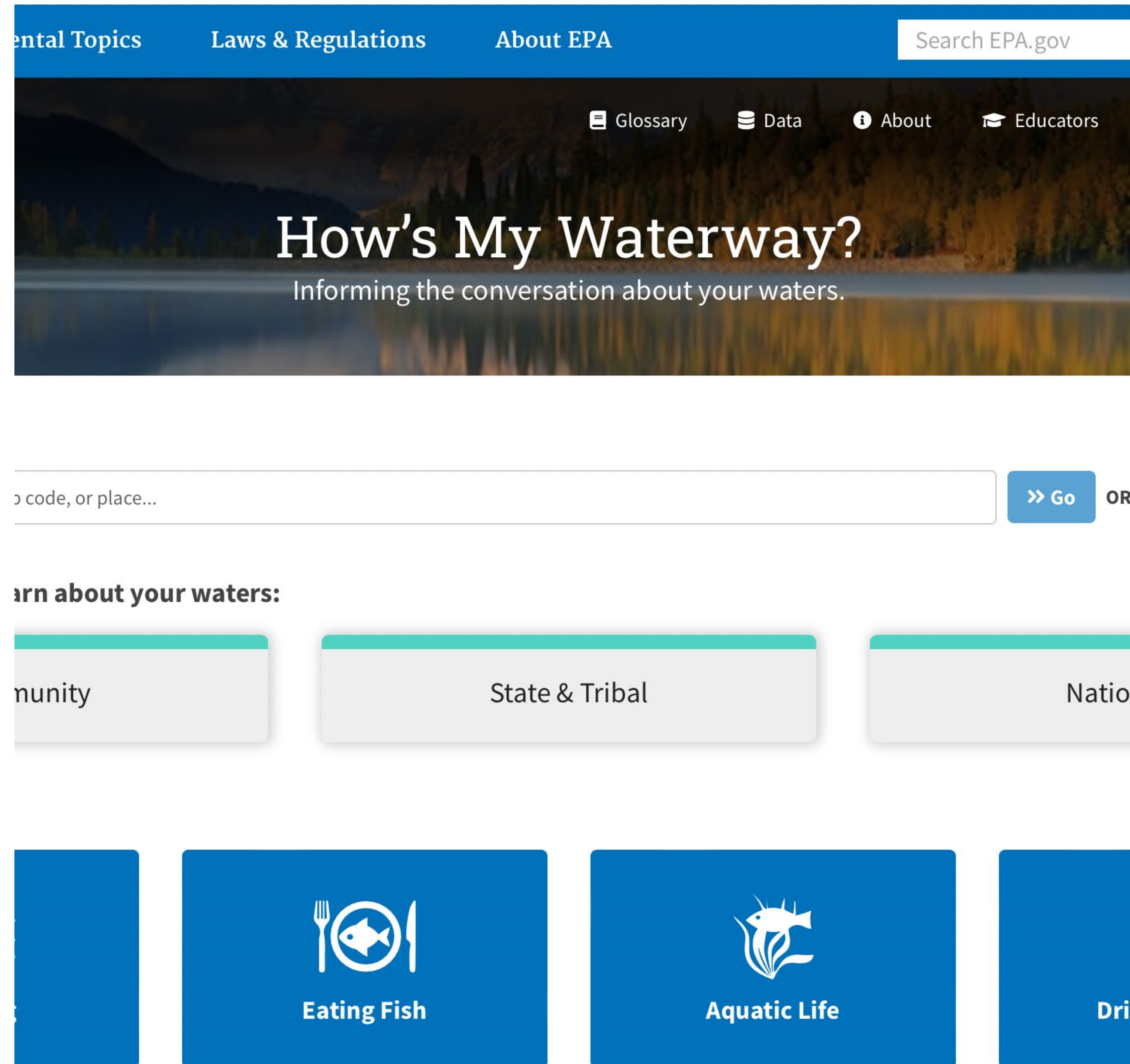


# How's My Waterway

September 19, 2023

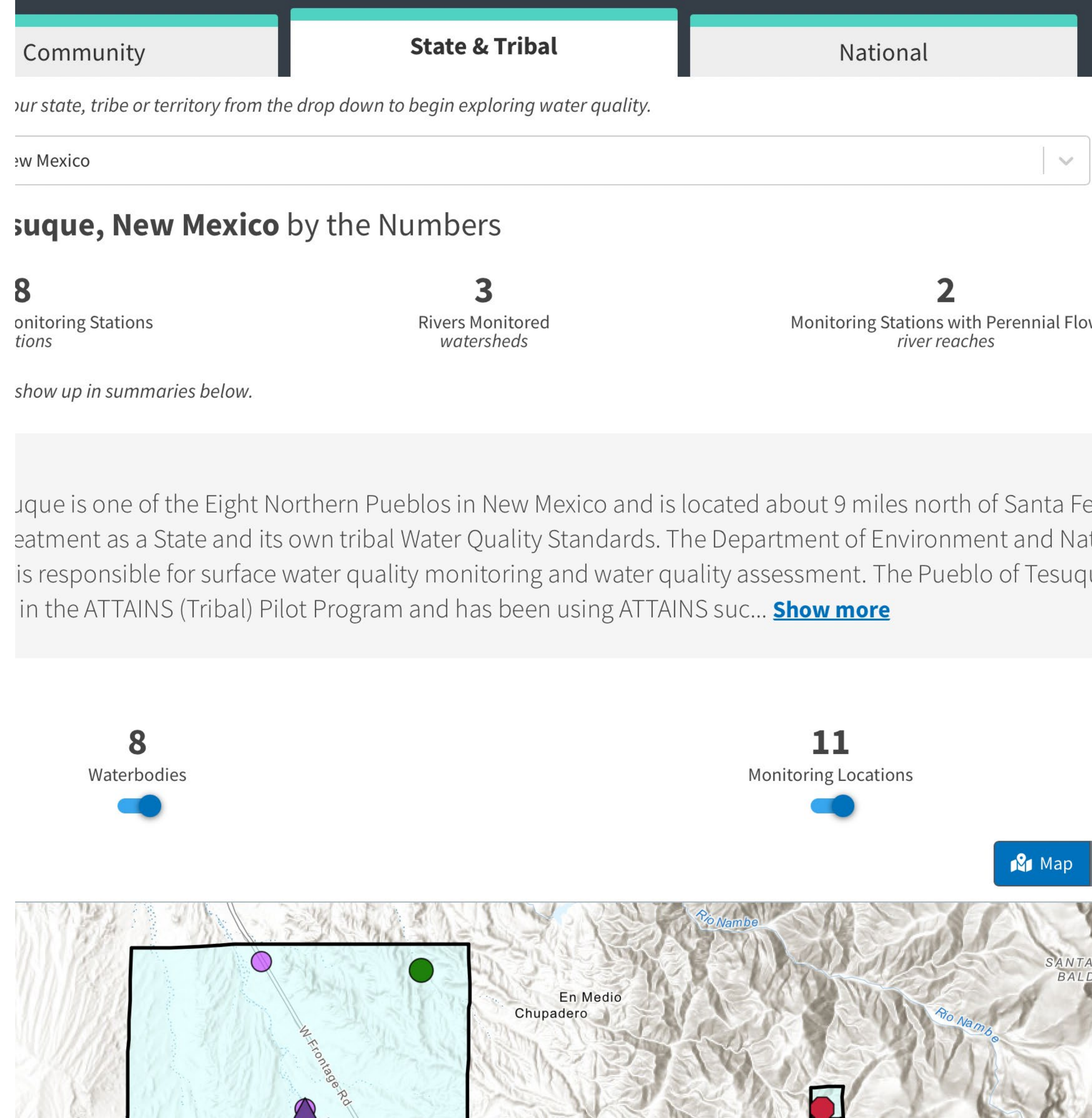
## What is How's My Waterway

- EPA's tool to provide the general public with information about the condition of their local waters
- Brings data in from a number of data systems including WQP and ATAINS
- Displays information on 3 scales: Community (HUC12), State/Tribe, and National



## Timeline of ATTAINS Tribal Data in How's My Waterway

- New How's My Waterway launched in June 2020
- Tribal assessment data was added to Community page in December 2020
- A cultural use group was added in April 2022
- Displays tribal and state data side-by-side
- Tribal pages launched in November 2022



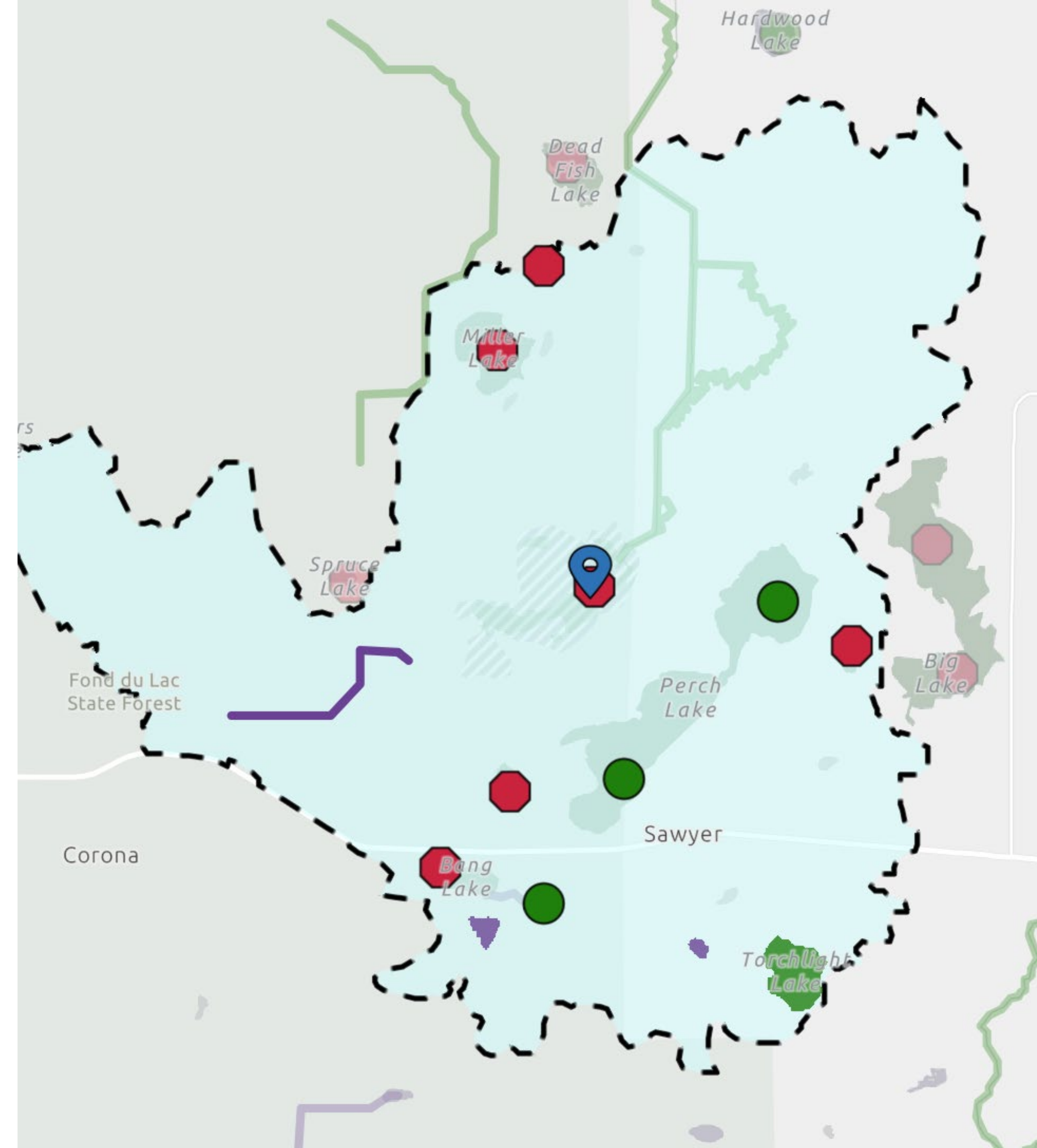
Demo

# Hands-On

<https://mywaterway.epa.gov>

## Assessment Unit Considerations

- Assessment units represent where the assessment decision applies
- Can be points, lines, and/or polygons
- Most tribes use points (no need to submit GIS)
- If doing lines or polygons, need to submit GIS
  - Are you considering using lines or polygons?
  - If creating GIS for your assessment units was easier would you be more interested in using lines or polygons?



A scenic landscape photograph featuring a river flowing through a valley. The river is surrounded by lush green vegetation and forested hills. The sky is filled with large, white clouds. In the foreground, there are dense green bushes and a wooden fence. The word "Questions?" is overlaid in the center of the image in a white, sans-serif font.

Questions?